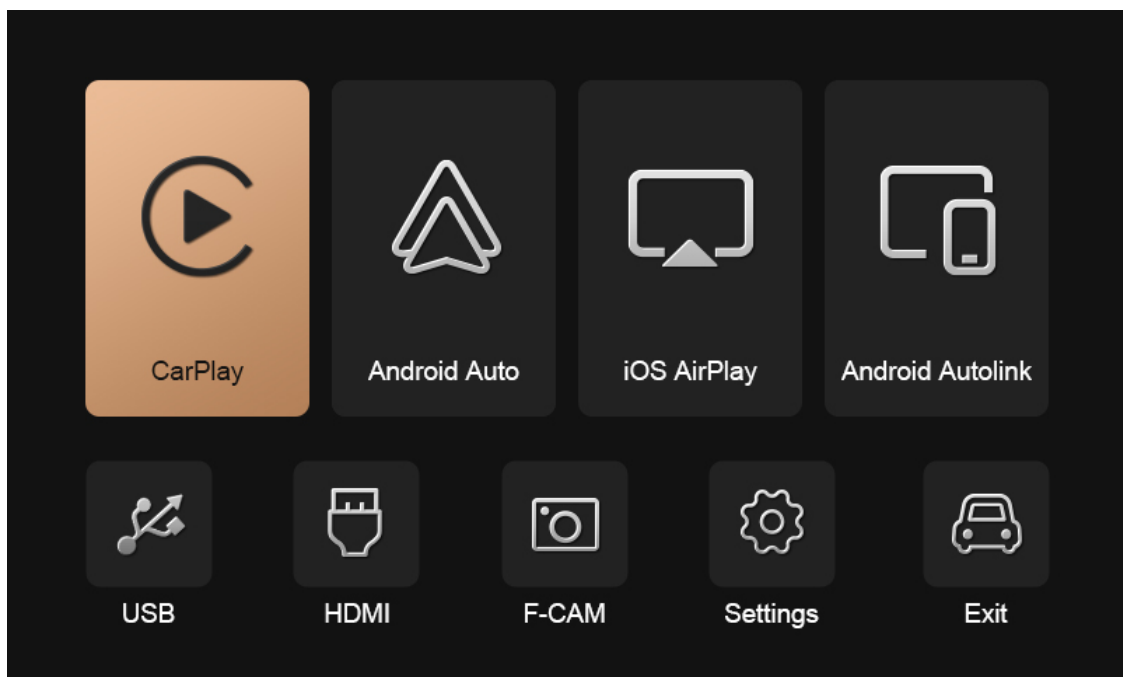


# INSTRUCTION MANUAL

## CHAMPION OEM INTERFACE



**CARTIZAN<sup>®</sup>**

HIGHLIGHTS .....	5
MAIN INTERFACE .....	6
APPLE CARPLAY .....	7
Connect to USB cable CarPlay.....	7
How to connect to wireless CarPlay.....	8
ANDROID AUTO.....	10
Connect to USB cable Android Auto .....	10
How to connect to wireless Android Auto .....	10
IOS AIRPLAY.....	12
ANDROID AUTOLINK.....	13

<b>SETTINGS.....</b>	<b>14</b>
<b>Connections .....</b>	<b>14</b>
Connect New Device .....	14
BT Paired Device .....	14
BT Reset.....	14
<b>Audio .....</b>	<b>15</b>
Volume .....	15
Equalizer .....	16
Microphone .....	16
Equal Loudness .....	16
Navi and factory FM audio mixed .....	16
<b>Parking.....</b>	<b>17</b>
Reverse Camera Type .....	17
Activate R-CAM through Reversing Lights.....	17
Dynamic Parking Guideline .....	18
Parking Distance Control .....	18
Front-View Display Time .....	18
Flip Front View Horizontal.....	18
Exit Reversing with MENU Button .....	19
Full Screen Reversing .....	19
Front Camera Type.....	19
Ignore 360 Panoramic State .....	19
Delay for Factory Reversing.....	19
L/R Detect for 360 Panoramic.....	19
<b>Display .....</b>	<b>20</b>
Size Adjustment .....	20
Colors .....	20
<b>Advanced Features.....</b>	<b>21</b>
Right-Hand Drive CarPlay .....	21
Auto Switch CarPlay/AA Appearance.....	22
Enable Steering Wheel Control.....	22
Enable Page Up/Down in CarPlay .....	22
Language .....	22
Restart .....	22
SWC Options .....	23
Center Console Type .....	23
Switch Interface with BACK Button.....	23
Enable Steering Wheel Control.....	23
<b>Information.....</b>	<b>24</b>
<b>Software Update .....</b>	<b>24</b>
<b>Factory Mode .....</b>	<b>24</b>
<b>HOW TO .....</b>	<b>25</b>
How to restart the system quickly .....	25
How to adjust parking guideline .....	25

---

## // WARNING

In order to protect the driving safety and avoid break the traffic law; please DO NOT operate the interface while driving.

The reversing surveillance function just is used in reversing assistance. Please check the entire surroundings while reversing.

All steps of installation should be done by the well-trained specialist.

During installation, the ignition key should be taken off and after all installation finished, connect power cable last.

Please DO NOT plug or pull the connected cables in the state of power-on, in order to avoid damaged monitor or accessory.

Install wiring in a manner in which cables will not come in contact with metal parts. The wiring may be damaged by contact with metal parts, resulting in fire and shocks. Avoid all contact with hot surfaces when wiring the main unit. High temperatures may damage wiring, causing shorts, arcing and fires.

Please DO NOT put the product in the damp environment or water, in order to avoid electric shock, damaged and fire accident caused by a short circuit.

Kindly check all components are in the box when receiving the product. If anything missing, inform to the supplier/manufacturer.

Start the engine before loading, check the interface whether have function displayed, key control whether correct, the vehicle interface whether having a scratch. Please give the feedback to the supplier/manufacturer if there have any questions.

Please note that put the disassembled automotive components in a good way on the installation process, avoid scratching the instrument panel, the leftovers of connecting cables need to handle and DO NOT leave it in the car. The connecting plug must be insulated in order to short circuit.

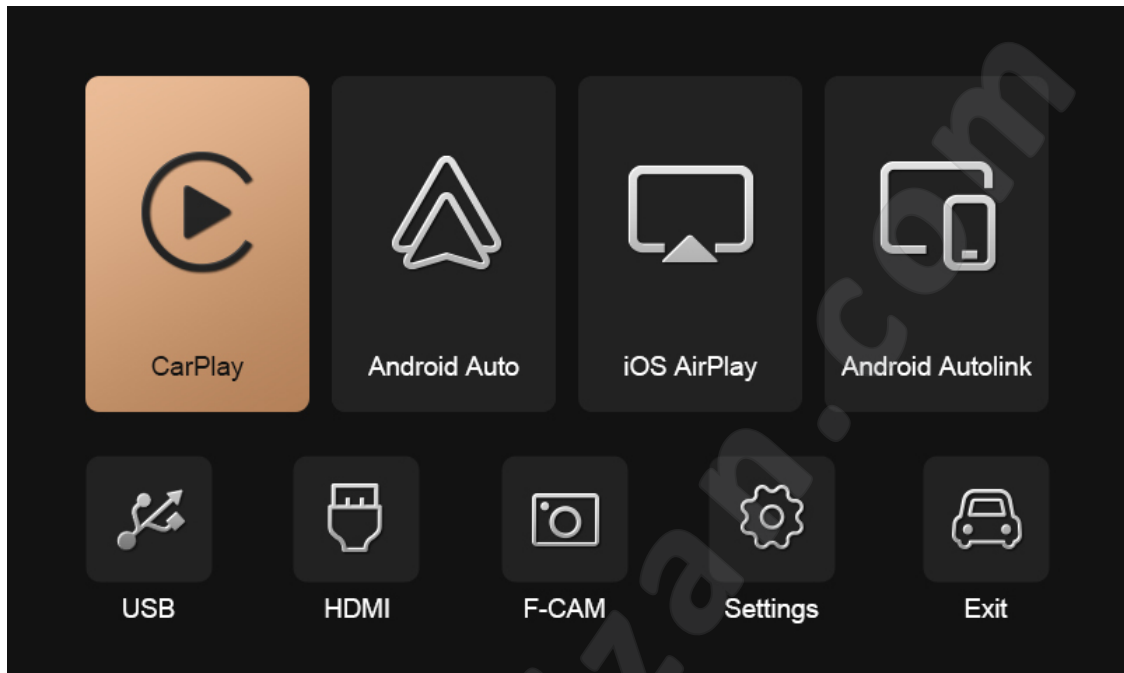
The cables should be connected in a good way, the vehicle installation space is a little small, so reduce space usage as far as possible. There should be a good plan about connect cables, avoid affecting the active component of connecting, such as control components of turning the steering wheel, throttle and brake pedal. There need to be fastened after connecting cables in case of a drop.

---

## // HIGHLIGHTS

- Integrated all in one module supports Apple CarPlay (wireless & wired), Android Auto (wireless & wired), iOS wireless AirPlay mirroring, Android device wired screen mirror (AutoLink)
- Auto switch CarPlay / Android Auto appearance (light or dark) depending on car headlights
- Integrate high-performance DSP module and support audio equalizer settings
- Adjustable Wi-Fi channel for a better wireless experience
- Adjustable microphone settings including volume, echo canceling, sensitivity, etc
- Multi-adjustable volume including navigation, multimedia, in call, ringer, voice assistant
- 720P HDMI audio & video input
- Support front and rear view camera in
- Auto enable front view after exiting reversing and easy setup its duration on menu settings (15s max.)
- Adjustable position for dynamic parking guideline
- Compatible with factory microphone and speakers
- Mobile phone charging
- Press and hold one button to restart the interface quickly
- Further software update via USB extension
- Supports USB HD video (up to 1080P) and lossless music (APE, WAV, FLAC, MP3, WMA, etc) playback

## // MAIN INTERFACE

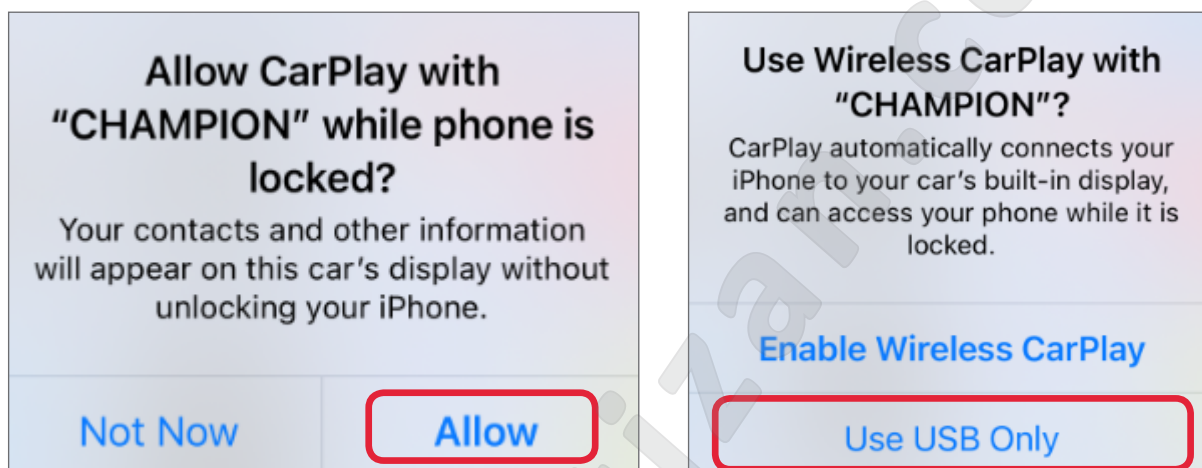



- CarPlay: Wireless & wired Apple CarPlay
- Android Auto: Wireless & wired Android Auto
- iOS AirPlay: Wireless AirPlay mirroring for iPhone, iPad
- Android Autolink: USB cable screen mirror for Android smartphone
- USB Media: USB flash drive multimedia playback (music, video, picture)
- HDMI: 720P HDMI audio & video input
- F-CAM: Front camera input
- Settings: More settings including connection, equalizer, volume, language, system version, factory mode, etc.
- Exit: Back to factory infotainment system

## // APPLE CARPLAY

### ■ Connect to USB cable CarPlay

Plug in an iPhone with lightning USB cable, select "**CarPlay**" icon of interface to enter CarPlay function. Then tap "**Allow, Use USB Only**" on the iPhone pop-up notifications.

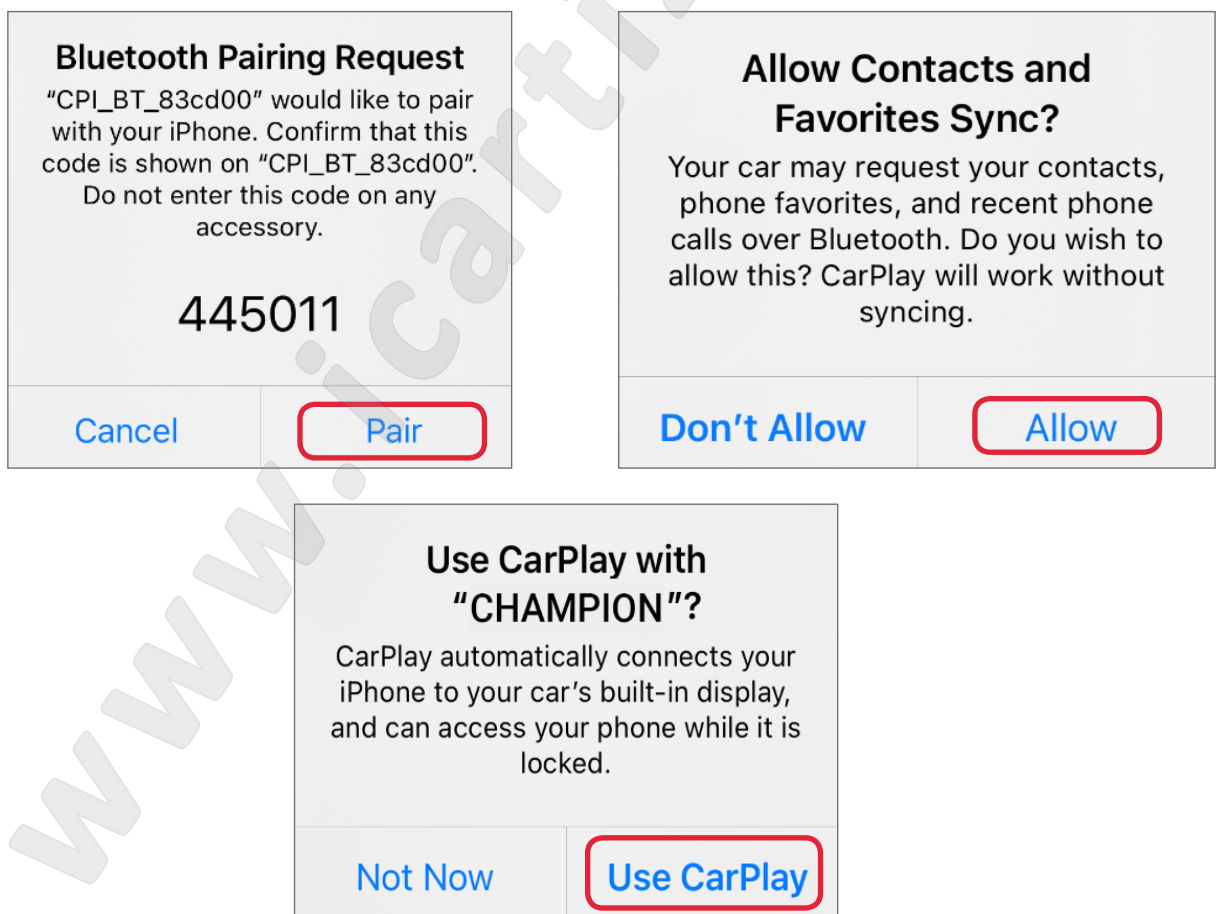


 For the better connection performance, please use the original genuine USB cable.

## ■ How to connect to wireless CarPlay

### ● Connection method I

1. Turn on your iPhone's WiFi / Bluetooth and stay on the BT menu (allow new connections).
2. On CHAMPION interface, select **"Settings" >>> "Connection" >>> "Connect New Devices" >>> "Start Search"**.
3. Tap **"Stop Search"** when your iPhone device found, then select your iPhone device from the list, next select **"iAP2 Profile"**.
4. On your iPhone, tap **"Pair - Allow - Use CarPlay"** on the following pop-up notifications.
5. It will connect to wireless CarPlay after a few seconds.

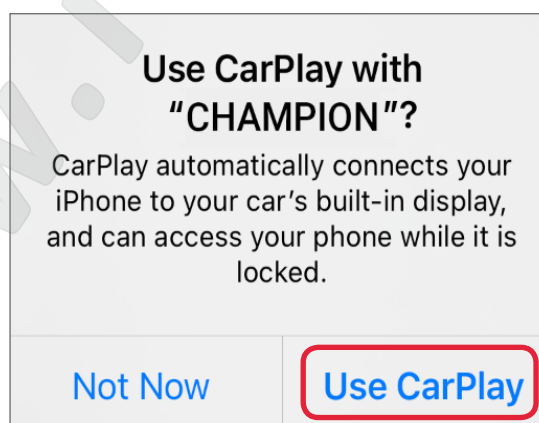
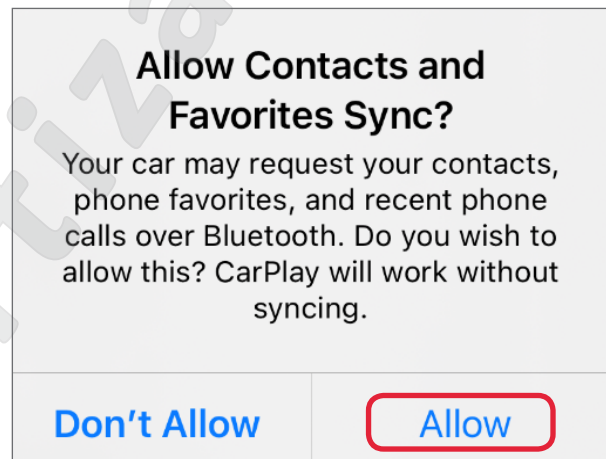
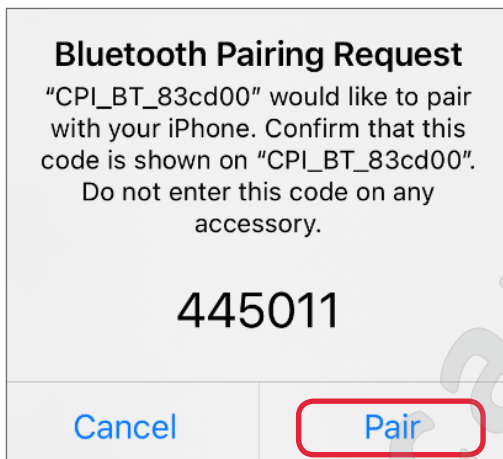
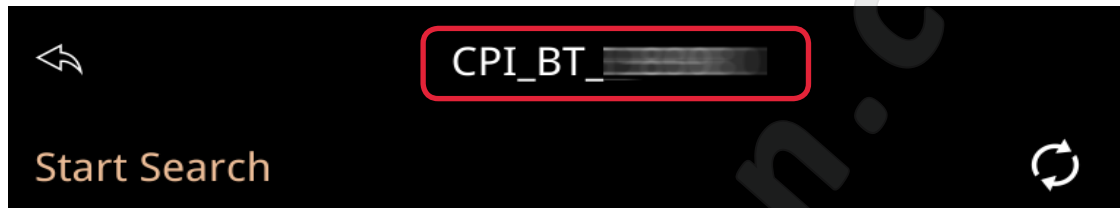


**⚠** If you have followed the **1, 2** steps and still could not find your iPhone device, go to **"Connection" >>> "BT Paired Device"**, and delete your iPhone device, then try again.



## ● Connection method II

1. Turn on your iPhone's WiFi / Bluetooth and search BT name "**CPI\_BT\_XXXX**" then tap it on your iPhone. *Tips. The exact interface BT name will list on the menu of "Connect New Devices".*
2. Tap "**Pair - Allow - Use CarPlay**" on the following pop-up notifications.
3. It will connect to wireless CarPlay after a few seconds.



**⚠** For a better wireless experience, please make sure interface's WiFi antenna installed. And DO NOT stick the antenna on any metal parts.

## // ANDROID AUTO



### Android Auto - Google Maps, Media & Messaging

Google LLC Auto & Vehicles



★★★★★ 1,084,011

This app is compatible with all of your devices.

Installed

Before using Android Auto, please make sure the latest Android Auto app installed on your smartphone. Wireless Android Auto is supported on 1. smartphone running Android 11 or newer with 5GHz Wi-Fi built-in 2. Google phone 3. Some Samsung Galaxy phone.

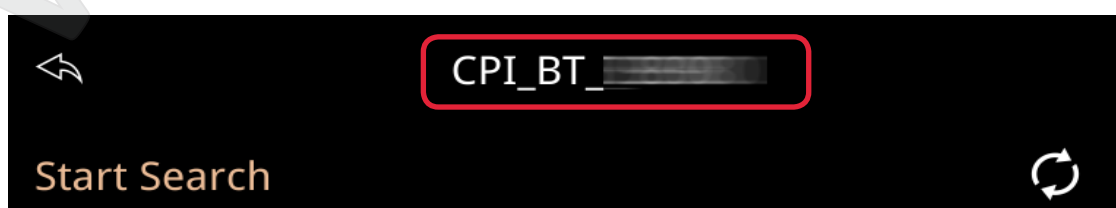
#### ■ Connect to USB cable Android Auto

Plug in an Android smartphone with USB cable, select "**Android Auto**" icon of interface to use wired Android Auto.

#### ■ How to connect to wireless Android Auto

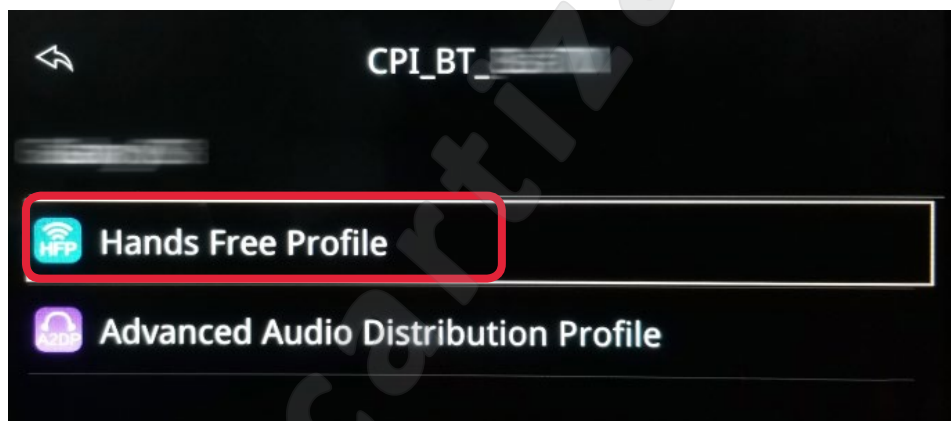
##### ● Connection method I

1. Turn on your smartphone's WiFi / Bluetooth and search BT name "**CPI\_BT\_XXXX**" then tap it on your phone. *Tips. The exact interface BT name will list on the menu of "**Connect New Devices**".*
2. Confirm the BT pair request and other notifications on your Android smartphone.
3. It will connect to wireless Android Auto after a few seconds.



## ● Connection method II

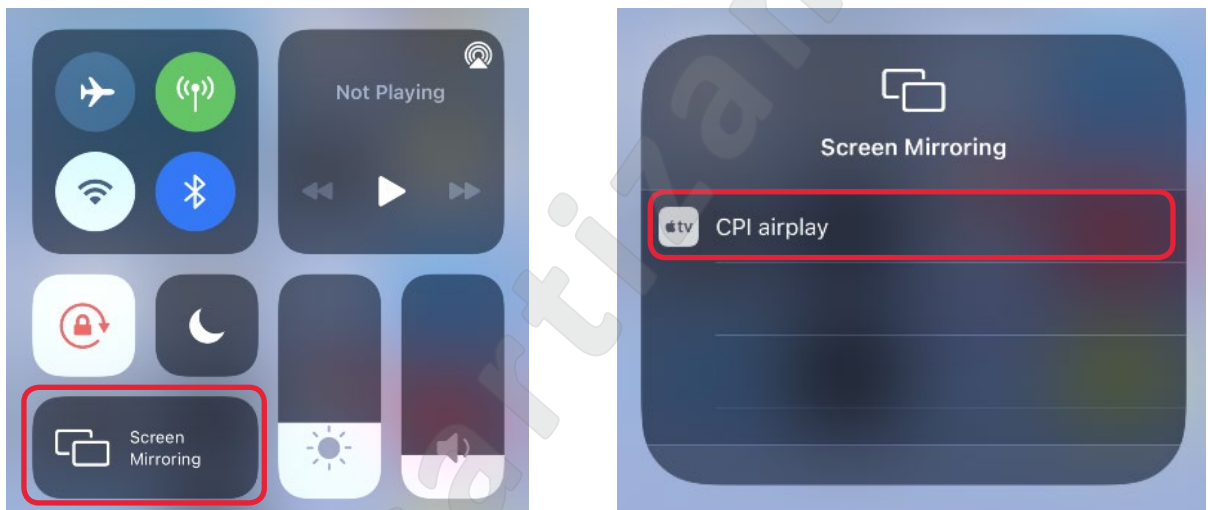
1. Turn on your Android smartphone's WiFi / Bluetooth (allow new connections).
2. On CHAMPION interface, select "**Settings**" >>> "**Connection**" >>> "**Connect New Devices**" >>> "**Start Search**".
3. Tap "**Stop Search**" when your smartphone found, then select your phone device from the list, next select "**Hands Free Profile**".
4. Confirm the BT pair request and other notifications on your Android smartphone.
5. It will connect to wireless Android Auto after a few seconds.



- If you have followed the **1, 2** steps and still could not find your Android device, go to "**Connection**" >>> "**BT Paired Device**", and delete your phone device, then try again.
- For a better wireless experience, please make sure interface's WiFi antenna installed. And DO NOT stick the antenna on any metal parts.

## // IOS AIRPLAY

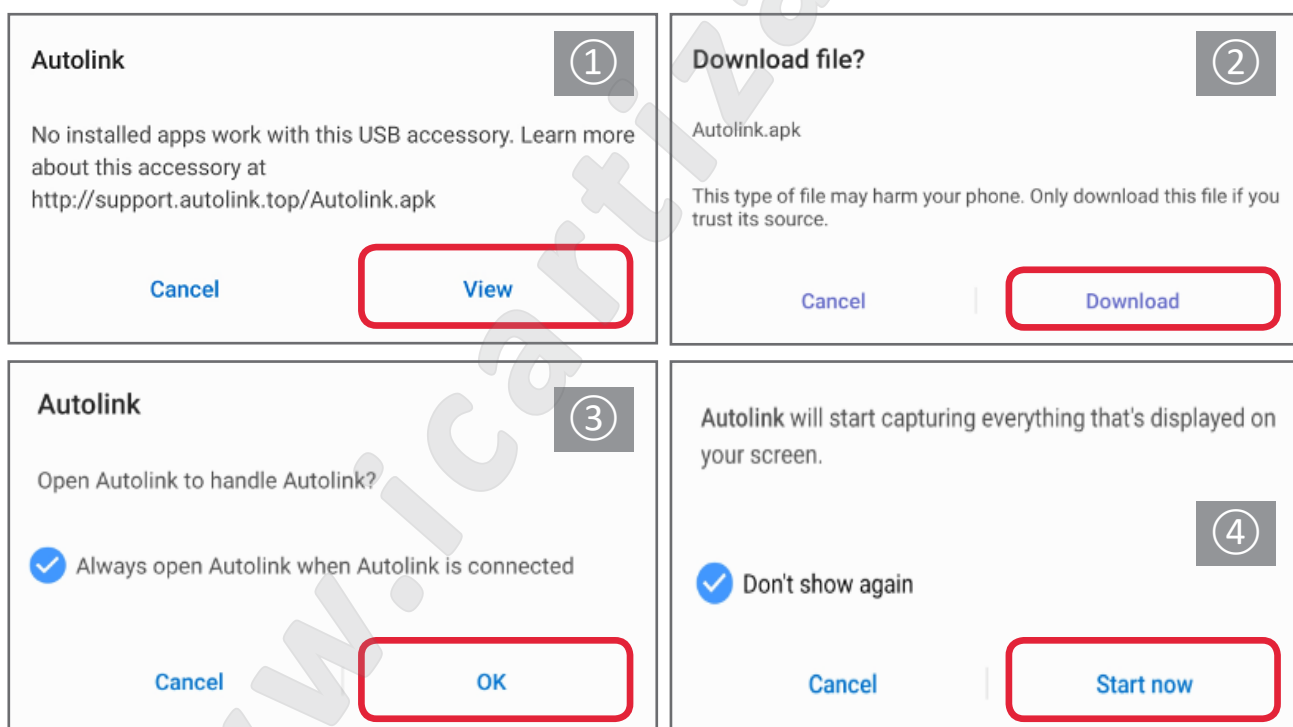
1. Select "**iOS AirPlay**" icon of interface.
2. Connect your iPhone/iPad to the WiFi network "**CPI\_Wireless\_xxxx**" (password: 88888888).
3. Open iPhone/iPad's **Control Center**, tap **Screen Mirroring** and select **CPI airplay** from the list of devices.
4. It will connect to Airplay screen mirroring after a few seconds.



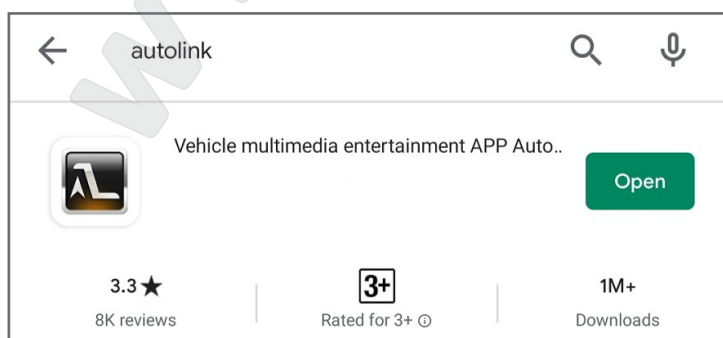
# // ANDROID AUTOLINK

## ■ Connection method I

1. Select "**Autolink**" icon of interface, then plug in a smartphone with USB cable.
2. Tap "**View**" and "**Download**" on Android smartphone's pop-up notifications to download and install the app: **Autolink**.
3. After the installation finish, disconnect and reconnect the USB cable.
4. Tick "**Always open Autolink when Autolink is connected**" and tap "**OK**"
5. Always tap "**Allow**" on the next 3 notifications. Then tick "**Don't show again**" and tap "**Start now**"
6. Tap "**OK**" on Bluetooth pairing request menu. Done!



## ■ Connection method II Google Play



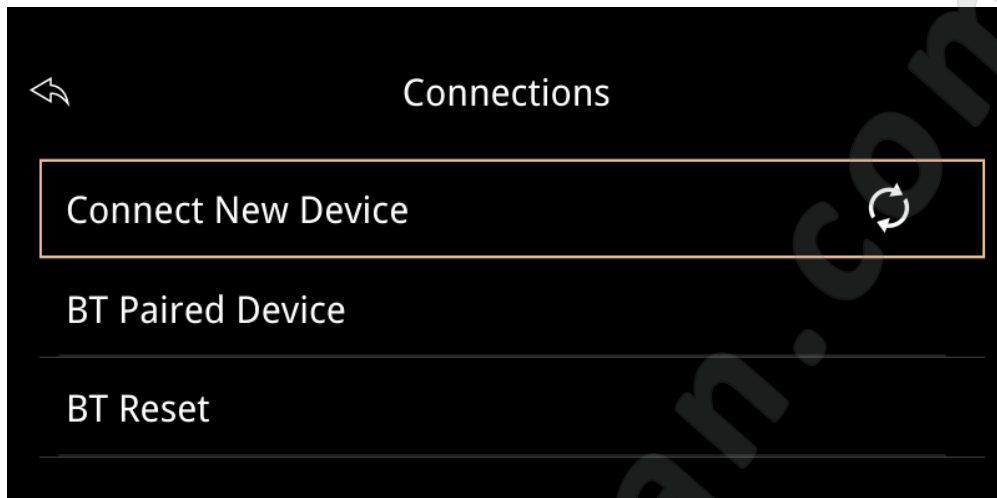
Search & install "**AUTOLINK**" on Google Play Store.

Select "**Autolink**" icon of interface, plug in the smartphone with USB cable.

Follow the "**4, 5, 6**" steps above.

## // SETTINGS

### ■ Connections



- **Connect New Device**

Connect a new iPhone/Android smartphone to wireless Apple CarPlay/Android Auto (refer to page 8 and page 11).

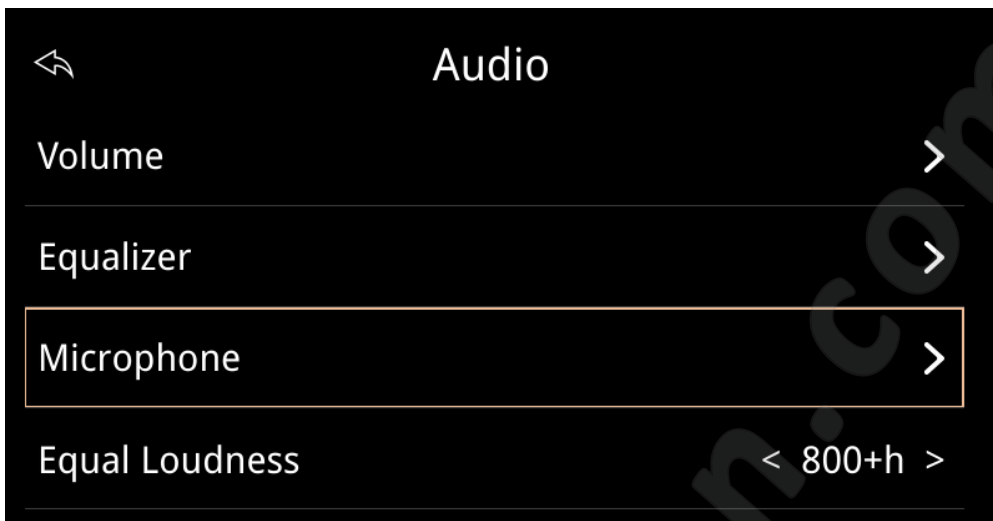
- **BT Paired Device**

List of paired Bluetooth devices, you can connect/disconnect/delete paired device here.

- **BT Reset**

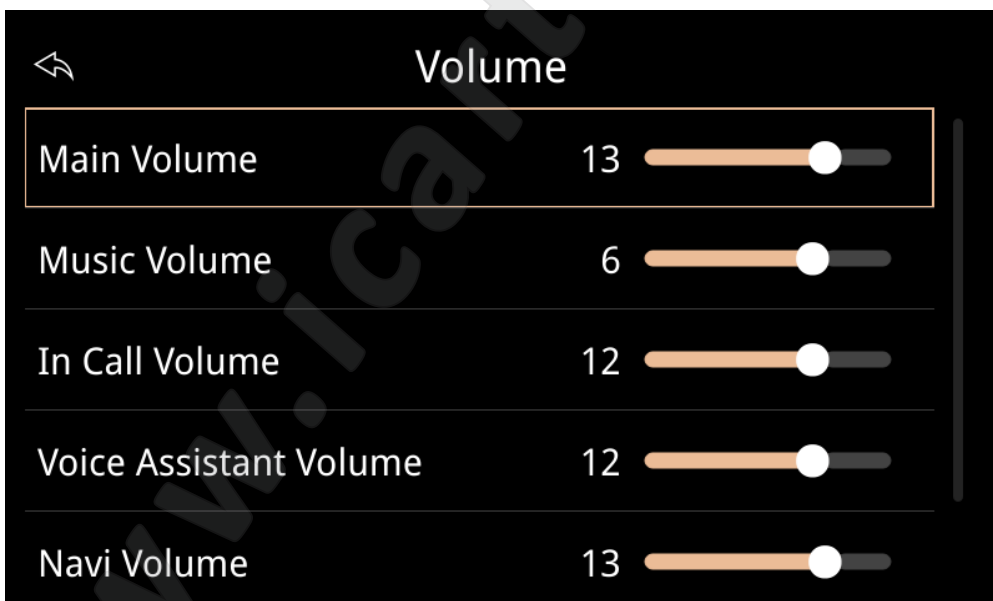
Reset Bluetooth settings, all connection history will be erased after confirmation.

## ■ Audio



- General setting options
- Unique setting options for some car models.

## ● Volume

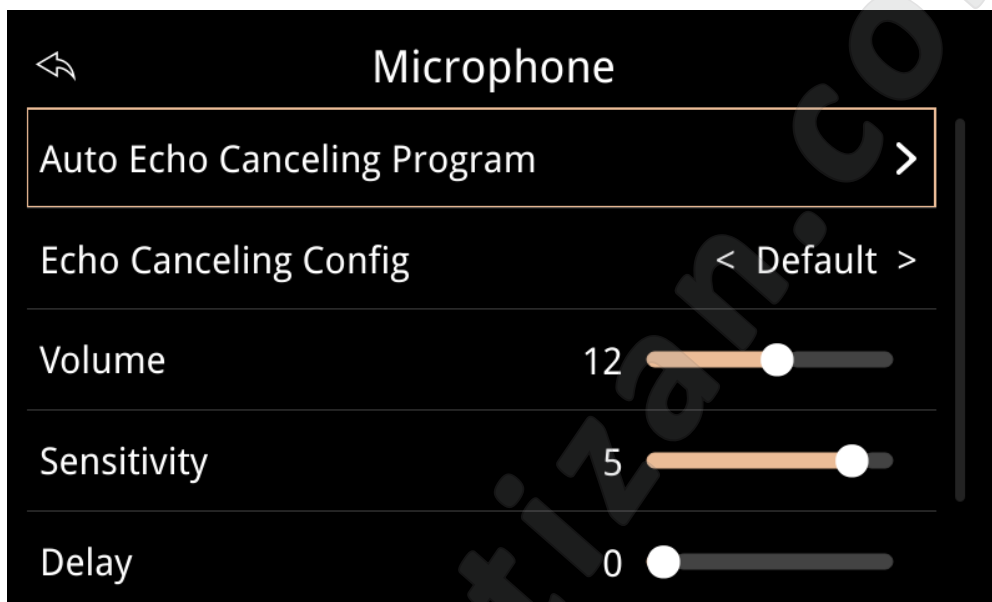


- Main Volume: for the whole interface's volume
- Music Volume: for music playback volume
- In Call Volume: for phone talking volume
- Voice Assistant Volume: for Siri, Google Assistant volume
- Navi Volume: for turn-by-turn directions volume

- **Equalizer**

Equalization settings in music playback, includes standard, soft, pop, electronica, jazz, rock, classical, custom, etc.

- **Microphone**



- Auto Echo Canceling Program: smart echo canceling program for microphone. It will calculate a suitable microphone configuration according to your current in-car environment. Please DO NOT use this feature if your microphone does not echo.
- Echo Canceling Config: CHAMPION interface module integrates some common microphone configurations for your car models. You could choose your suitable option by manual, or keep default if MIC does not echo.

- **Equal Loudness**

Select the suitable option for your car model if the audio noisy.

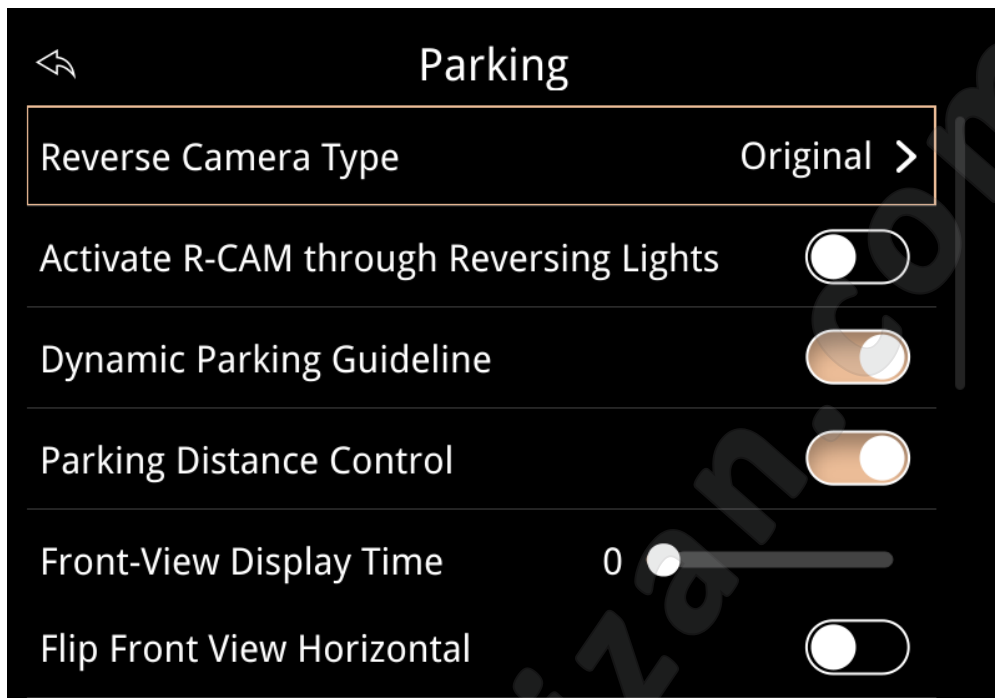
- **Navi and factory FM audio mixed**

Unique option for **NTG5XP** model (with external AMP box). Support listening to the OEM FM/AM radio while using CarPlay navigation turn-by-turn directions.

**Shortcut:** Push press **Comand Controller UP** button and hold for 2 seconds.



## ■ Parking



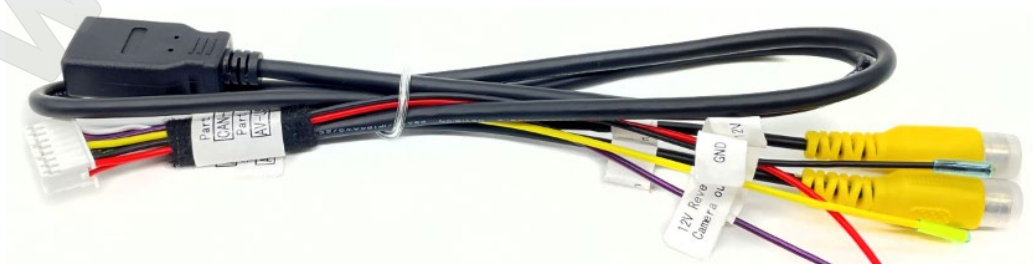
- General setting options
- Unique setting options for some car models.

### ● Reverse Camera Type

Option for rear view camera type: Original or Aftermarket.  
Original means factory rear view system or non-camera.  
Aftermarket means add-on camera.

### ● Activate R-CAM through Reversing Lights

For some car models, if interface's cable "Camera 12V out" does not output 12V when shifting to R gear, connect it to the "Reverse Detect" cable and enable this option.



- **Dynamic Parking Guideline**

Enable dynamic parking guideline on aftermarket rear view system.

- **Parking Distance Control**

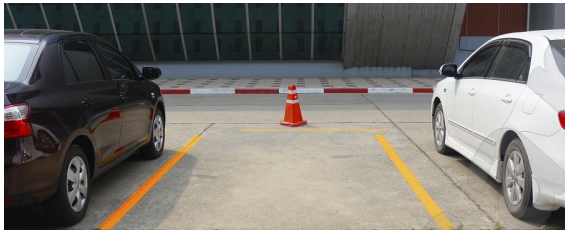
Enable parking distance control on aftermarket rear view system.

- **Front-View Display Time**

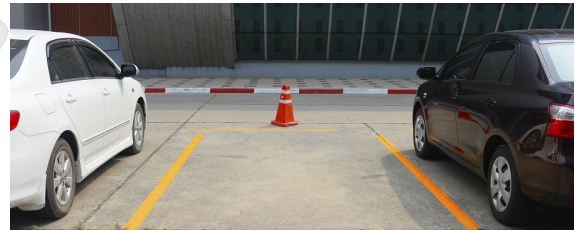
Set aftermarket front view camera duration after shifting from **R** gear. 15s max and 0 means disable front-view. Press "**BACK**" button to exit front-view manually.

- **Flip Front View Horizontal**

Flip front view horizontal.



ON



OFF

---

- **Exit Reversing with MENU Button**

For some BMW vehicles (without PARK ASSISTANT button) to exit rear view manually after shifting from **R** gear.

- **Full Screen Reversing**

Full-screen rear view system. Only for some wide-screen vehicles like BMW 8.8/10.25, Lexus 10.3/12.3 inch, etc. Required to restart the interface for effect after changing the setting.

- **Front Camera Type**

Option for front view camera type on Mercedes vehicles: Original / Aftermarket. Original means factory front view camera. Aftermarket means add-on front view camera.

- **Ignore 360 Panoramic State**

Unique option for Mercedes car models. Ignore 360 panoramic system state.

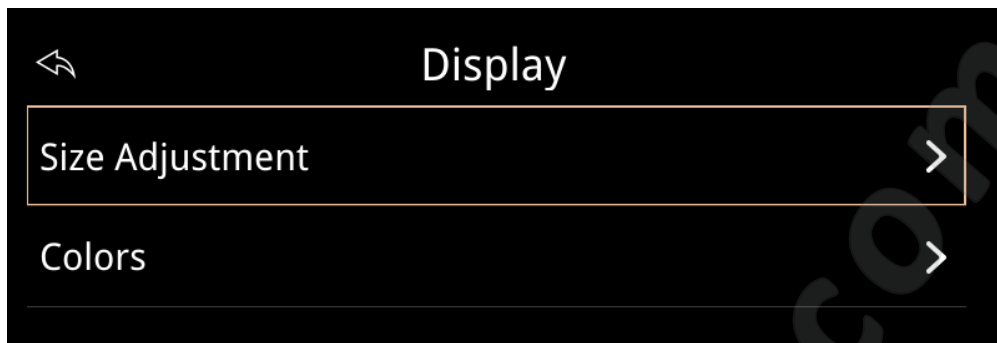
- **Delay for Factory Reversing**

Unique option for Lexus vehicles. For some car model, the screen get black after exit **R** gear, change the options inside. There are 4 options inside: General (default), Disable, High, Low.

- **L/R Detect for 360 Panoramic**

Unique option for Lexus vehicles. Allow using left/right lamp detect function for aftermarket 360 panoramic system. Your 360 panoramic must come with this function first.

## ■ Display



### ● Size Adjustment

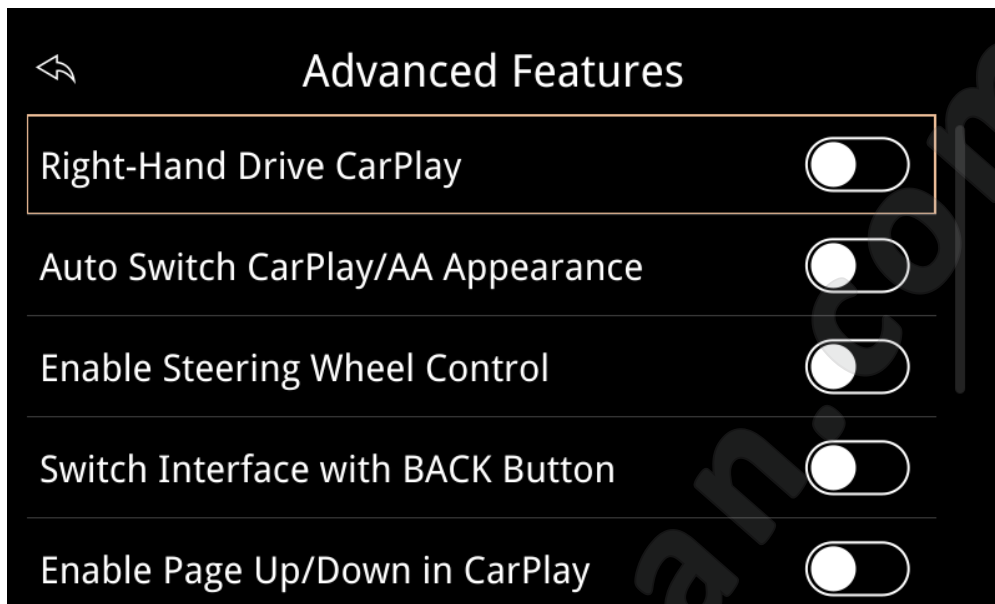
Size adjustment for CarPlay and Android Auto, including left, right, top, bottom. Please DO NOT adjust if display correctly.



### ● Colors

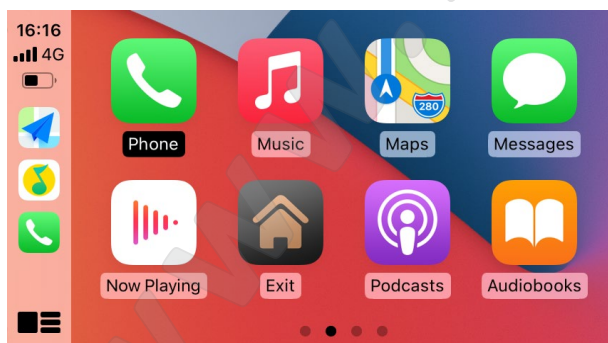
Colors adjustment including Contrast, Chroma, Saturation, Brightness.

## ■ Advanced Features

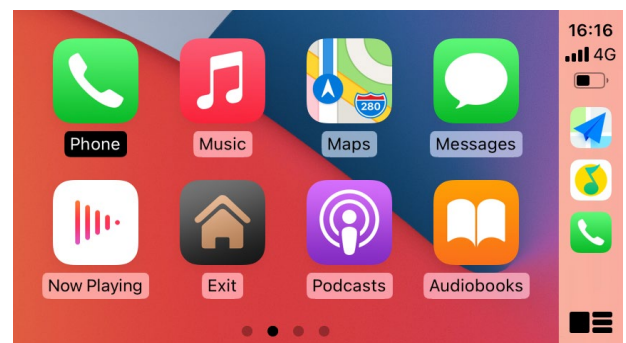


- General setting options
- Unique setting options for some car models.

## ● Right-Hand Drive CarPlay



OFF



ON

---

- **Auto Switch CarPlay/AA Appearance**

When enabling this option, Apple CarPlay and Android Auto user interface will auto switch light/dark appearance depending on the car headlights.

⚠ Please make sure your iOS/Android Auto app version support auto-switch mode before using this function.

- **Enable Steering Wheel Control**

Enable steering wheel buttons control interface module.

- **Enable Page Up/Down in CarPlay**

For some car models with a joystick controller, it allows to page up/down in CarPlay maps when enabling this option.

- **Language**

Language setup for homepage and settings.

- **Restart**

Restart the interface system after confirmation. You can also press the **"BACK"** button and hold for 8 seconds to restart the system quickly.

---

- **SWC Options**

Unique option for Lexus vehicles. When your car steering wheel control button not working properly, change the options inside. There are 3 options inside: A (default), B, C.

- **Center Console Type**

Unique option for Lexus vehicles. Select "**Mini Touch Pad**" if your car models with a small size touchpad (4 buttons) in the center console. Otherwise, set "**Joystick**" by default.

- **Switch Interface with BACK Button**

Unique option for some BMW vehicles. When setting this option to "**ON**", it allows switching interface by "**BACK**" button.

- **Enable Steering Wheel Control**

Allows steering wheel buttons to control interface when set to "**ON**".

---

## ■ Information



## ■ Software Update

Update options including MCU, System, CarPlay icon, etc. For the system stability, a password is required to enter this function, please contact our after-sales team to obtain the password.

## ■ Factory Mode

For the system stability, a password is required to enter this function, please contact our after-sales team to obtain the password.



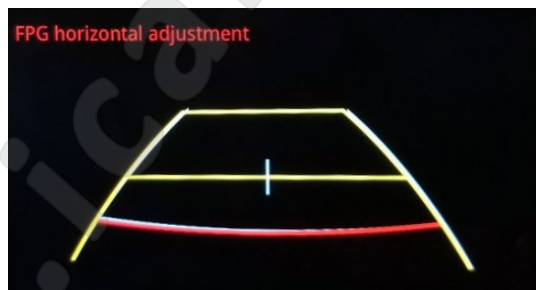
## // HOW TO

### ■ How to restart the system quickly

To restart the system, please press "**BACK**" button and hold for 8 seconds.

### ■ How to adjust parking guideline

1. Enable dynamic parking guideline in parking settings.
2. Shift to **R** gear.
3. Press and hold the "**Enter**" button for 3s to adjust guideline position horizontally. And there will be "FPG horizontal adjustment" on the display. Use knob control to adjust the FPG position.
4. Press and hold the "**Enter**" button for 3s again >>> FPG vertical adjustment.
5. Press and hold the "**Enter**" button for 3s again >>> FPG size adjustment.
6. Exit **R** gear. Position auto saved.



Google, Google Play, Android, Android Auto, are trademarks of Google Inc., registered in the U.S. and other countries.

Apple, iPhone, iPad, and CarPlay are trademarks of Apple Inc., registered in the U.S. and other countries.

We are not affiliated with Google Inc. or Apple Inc. All other product and service names mentioned are the trademarks of their respective companies.

---



